

CNC Storage Equipment



mscdirect.co.uk | 0800 66 33 55

Available
Today At

MSC[®]

Why buy bott

Global Presence, Local Service

The Bott Group was established over 90 years ago and Bott Ltd have been manufacturing workplace storage equipment in the U.K. for over 40 years. Collectively the Bott Group has 3 European manufacturing sites.

bott's modern, flexible manufacturing capability and modular design ethos enables us to make most products to order and offer a comprehensive range combined with short lead times.

bott have also invested in green technologies such as rain-water harvesting, energy efficiency, solar power, intelligent lighting and waste stream recycling.

MSC chose to partner with bott because of their wealth of in-house knowledge and skill. bott is well prepared to assist you with your workplace storage projects.

Designed To Perform, Built To Last

The Built to Last philosophy drives every aspect of bott's business. Its success is built on exceeding customer expectations.

Before any bott product goes on sale it undergoes a rigorous testing regime ranging from saltwater spray to load and wear tests meaning you can be sure that it's fit for purpose and have 100% confidence in its durability.

bott products have exceptionally high capacities from 100% extension, 200kg drawer options to 1 tonne U.D.L. rated benches.

Support is only a phone call away and we stand by our products to ensure they deliver for your business. That's why all bott manufactured workplace products come with a **10-year extended guarantee**.

Your project partner

Consult - Develop - Deliver - Install

MSC work alongside bott and their project sales engineering team who will visit your site to gain an in-depth understanding of your business and the exact project requirements. Working with you, and utilising their knowledge and experience, they will propose a tailored solution and provide full 3D visualisations giving a clear visual impression of the proposed workspace.

For more information see bottltd.co.uk/workshop-Installations.

Guarantee



Our **Built to Last** philosophy drives every aspect of our business.

From design to product testing to manufacture, our processes and our culture give us the confidence to stand behind our products.

That's why all bott manufactured workplace products come with a **10-year extended guarantee**.

10  **YRS**
**Extended
Guarantee**

bott CNC System

bott CNC storage systems protect your expensive tooling, maximising security for your valuable business assets.

The system incorporates many options, from cupboards & trolleys to workbench-mounted units.

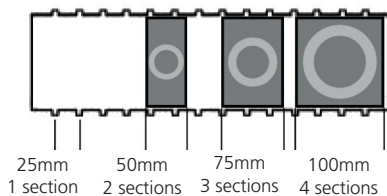
- Fits almost all CNC tool types
- Integrates with the bott cubio and perfo ranges
- Static and mobile options



Tool Holding Inserts

The core of the system are the easy fit tool holding inserts.

50, 75 or 100mm wide depending on model, they simply clip into the metal carrier or frame.

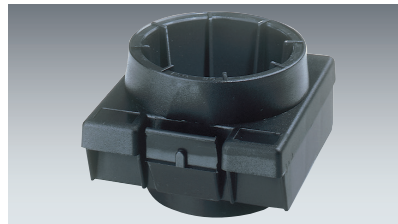


To calculate the insert capacity compare the tool type sections with the available sections per row in the metal carrier or holder.

A blank holder is available for other tool sizes. The solid plug is removed for machining to the required bore dimensions.

All inserts have a taper bore except VDI models. Top diameter shown.

The insert sits 32mm above the metal carrier or holder.



Tool Holding Inserts

Tool Type	Diameter (mm)	Sections	Width (mm)	Order Ref.
ISO30 / BT30 / SK30 / Morse 3	28	2	50	BOT-10516C
HSK - A40 / C40 / E40 / F40 / B50	30	2	50	BOT-10517M
HSK - A 32 / C32 / E32 / F32 / B40	24	2	50	BNR-11110D
Capto C3	23	2	50	BOT-10521A
Capto C4	29	2	50	BOT-02656J
VDI 30	30	3	75	BNR-02044D
VDI 40	40	3	75	BNR-02045A
ISO 35 / BT 35 / SK35 / Morse 4	35	3	75	BNR-02046K
ISO 40 / BT40 / SK40	41	3	75	BNR-02047E
ISO 45 / BT45 / SK45 / Morse 5	49	3	75	BNR-02048B
HSK - A50 / C50 / E50 / F50 / B63 / F63	38	3	75	BNR-11111A
HSK - A63 / C63 / E63 / B80	48	3	75	BNR-02050L
Capto C5	37	3	75	BOT-01394E
Capto C6	46	3	75	BOT-00499D
VDI 50	50	4	100	BNR-02051H
VDI 60	60	4	100	BNR-11112K
ISO 50 / BT 50 / SK50	67	4	100	BOT-10518J
HSK - A80 / C80 / E80 / F80 / B100	60	4	100	BNR-02054J
HSK - A100 / C100 / E100 / F100 / B125	75	4	100	BNR-11113E
Blank for Customising	\	4	100	BOT-01766D

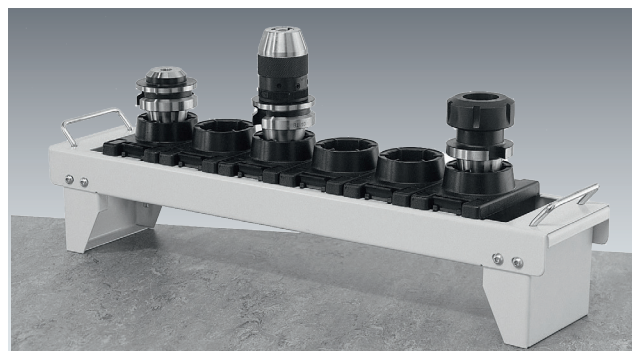
Tool Carriers

For use freestanding or in conjunction with trolleys, cupboards, benches and cabinets. Grab handles at each end allow for easy transportation.

Supplied with tool storage inserts for the most popular styles or empty for custom configurations.

Kitted Tool Carriers

Capacity	Tool Type	Order Ref.
10	ISO30 / BT30 / MT3	BNR-11101K
6	ISO40 / BT 40	BNR-11102E
5	ISO50 / BT50	BNR-11103B
6	VDI30	BNR-11104L
6	VDI40	BNR-11105H
5	VDI50	BNR-11106C
6	HSK - A63 / B80	BNR-11107M
5	HSK - A100 / B125	BNR-11108J



Dimensions (mm) - 590 wide x 125 deep x 110 high

Empty Tool Carrier

Rows	Sections	Order Ref.
1	20	BNR-01007H

Tool Carrier - Bench Stand

- Allows tool carriers to be stored on any worktop
- Will hold 3 tool carriers (not included)
- 600mm wide x 450mm deep x 375mm high

Item	Order Ref.
Bench Stand for 3x Tool Carriers	BOT-10515H



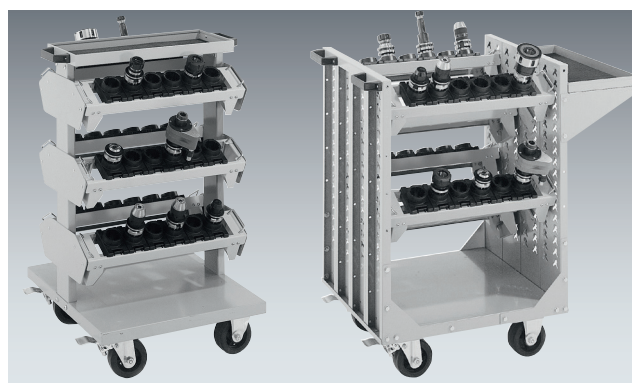
Carrier Trolleys

Compact Trolley (Left)

- Fixed Position
- Carriers fit directly into the trolley
- 650mm wide x 710mm deep x 1020mm high
- Supplied empty, add the required carriers
- 300kg total capacity

High Capacity Trolley (Right)

- Adjustable Position
- Each carrier requires a pair of carrier brackets
- An optional end shelf is available
- 670mm wide x 600mm deep x 985mm high
- Supplied empty, add the required carriers
- 300kg total capacity



Item	Order Ref.
Compact Trolley	BOT-02177E
High Capacity Trolley	BNR-01029H
End Shelf (HC Trolley only)	BOT-02863A
Carrier Bracket Set (HC Trolley only)	BOT-10522K

CNC Storage Cabinets

For high volume storage with ease of access and security CNC tooling may be stored in one of the bott cubio static or mobile cabinets and cupboards.

The cabinets will accept either the tool carriers (from page 4) via drawer brackets or direct into a drawer frame shown on page 6.

Both systems will work with a wide selection of cabinet sizes, the ideal model will depend upon the length and quantity of tooling.

Please ask for a no obligation quote or on site consultation to discuss your requirements.



CNC Storage Cupboards

Cupboards may also use these drawer options in addition there are sliding and static shelf options.

The ideal cupboard is 800 or 1050mm wide x 525mm deep. These are available with either perfo or louvre lined doors and in a variety of heights.

- 800mm or 1050mm wide x 525mm deep
- Choice of heights 800mm - 2000mm
- perfo or louvre door liner panels
- 75kg U.D.L. capacity drawers for drawer frames
- For carrier storage use the carrier holding shelf
- Sliding storage shelf accepts inserts (shown on page 3)
- Empty housings shown below, add accessories as required



Cupboard Housing

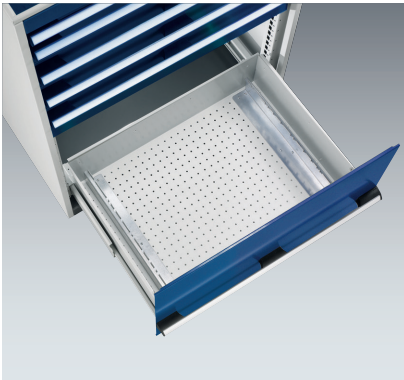
Cupboard Height	800mm wide		1050mm wide	
	Perfo Doors	Louvre Doors	Perfo Doors	Louvre Doors
	Order Ref.	Order Ref.	Order Ref.	Order Ref.
800	BOT-10523E	BOT-01531K	BOT-10556E	BOT-10560H
1000	BOT-10530J	BOT-10534E	BOT-02297B	BOT-10567E
1200	BOT-01214M	BOT-10541J	BOT-10571H	BOT-10575D
1600	BOT-01362B	BOT-01906K	BOT-10579B	BOT-10583C
2000	BOT-01585A	BOT-01518A	BOT-01755D	BOT-01796C

Tool Carrier - Drawer Brackets

Tool carriers may be mounted within the drawers using the accessory bracket set.

The ideal cabinet is 800mm wide x 650mm deep but the system will work with the larger sizes. Up to 3 carriers may be stored in each drawer.

Item	Order Ref.
Carrier Brackets	BOT-02193C



Carriers locate onto the drawer brackets.

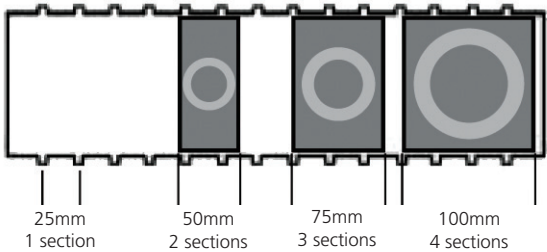


800mm x 650mm cabinet with carrier brackets.

Drawer Frames & Inserts

The tool holding inserts shown on page 3 clip into the drawer frames which have 2, 3 or 4 rows.

Drawer frames are available in 80 and 125mm heights to suit the tooling shank length. Choose a cabinet drawer front height large enough to accommodate your tooling's overall length.



Any combination of CNC inserts may be used together in a single row up to the maximum number of sections per row.

Empty drawer frame - add required inserts.

Cabinet Width (mm)	Cabinet Depth (mm)	Rows	Sections Per Row	80mm high	125mm high
				Order Ref.	Order Ref.
525	525	2	15	BNR-13001A	BNR-13002K
525	650	3	15	BOT-02197A	BOT-10595M
650	650	3	20	BOT-01869H	BOT-01870H
650	750	4	20	BOT-10597D	BOT-10598A
800	525	2	26	BNR-13005L	BNR-11116H
800	650	3	26	BOT-02464D	BOT-02228K
800	750	4	26	BOT-02639B	BOT-02827J
1050	525	2	36	BOT-10594C	BOT-02296E
1050	650	3	36	BOT-02250A	BOT-10596J
1050	750	4	36	BOT-10599K	BOT-10600L
1300	750	4	46	BOT-10601H	BOT-10602C

Tool Carrier - Sliding Shelves



Supplied empty as a frame for use with the tool carriers, 3 tool carriers may be located in each shelf. For tool carriers see page 4.

- Roller bearing slides, 75kg U.D.L. load capacity
- Overall height is 220mm

Cupboard Width	Cupboard Depth	Carrier Capacity	Order Ref.
800mm	525mm	3	BOT-01897A

Sliding Shelf Frame



Supplied as an empty frame for use with the tool holding inserts detailed on page 3.

- Roller bearing slides, 75kg U.D.L. load capacity
- Overall height is 220mm
- 3 Rows per sliding shelf frame
- 24 sections per row (800mm wide models)
- 33 sections per row (1050mm wide models)

Cupboard Width	Cupboard Depth	Order Ref.
800mm	525mm	BOT-01898K
1050mm	525mm	BOT-01757K

Drawer Pan



125mm or 175mm high drawers with 75kg U.D.L. capacity on smooth action roller bearing slides. Adjustable on a 25mm vertical pitch.

Cupboard Size (mm)	125mm High	175mm High
	Order Ref.	Order Ref.
800 x 525	BOT-00981M	BOT-01532E
1050 x 525	BOT-10593H	BOT-01756A

Available
Today At



More bott storage available from mscdirect.co.uk

Tool Storage



Trolleys



Work Benches



Work Stations



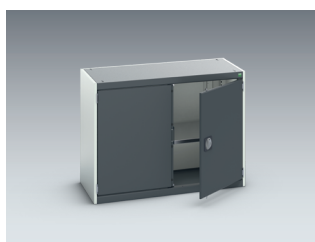
Shelving Systems



Small Parts Storage



Cupboards



Cabinets & Dividers

